



Department of Agrobiological and Bioresources

The Division of Animal Science

Overview

Research program in the division cover the range from analysis of genes to analysis of whole organisms and fall into four broad categories.

- **Function and Morphology**
- **Breeding and Reproduction**
- **Nutritional Biochemistry**
- **Animal Production and Reproduction (Farm)**

The division aims at the theoretical and technical investigation regarding animal production issues. High standard instruction and research concerning genetics, breeding, reproduction, morphology, ecology, nutrition and feeding, physiology, pathology, and management are conducted sophisticatedly and widely. In cooperation with the National Institute of Livestock and Grassland Science, instruction and research are also conducted.

The Division of Animal Science

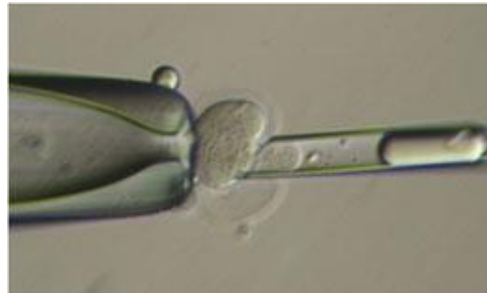
Faculty



Midori Yoshizawa, Ph.D.

Professor
Animal Reproduction

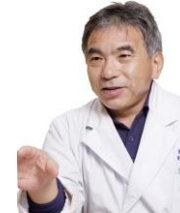
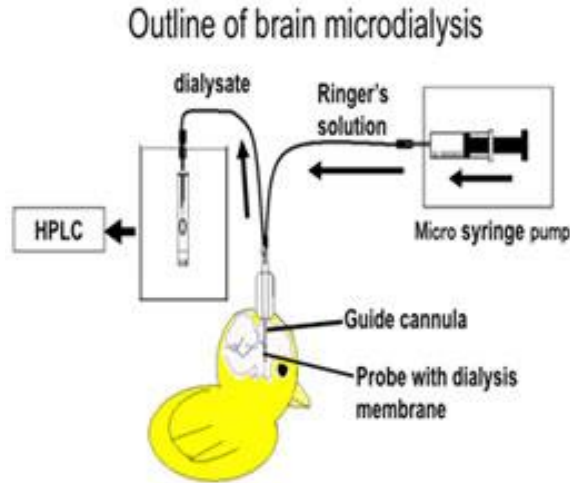
“Reproductive technology and cytogenetics in mammals”



Kunio Sugahara, Ph.D.

Professor
Animal Nutrition

“Regulation of energy metabolism in domestic fowl”



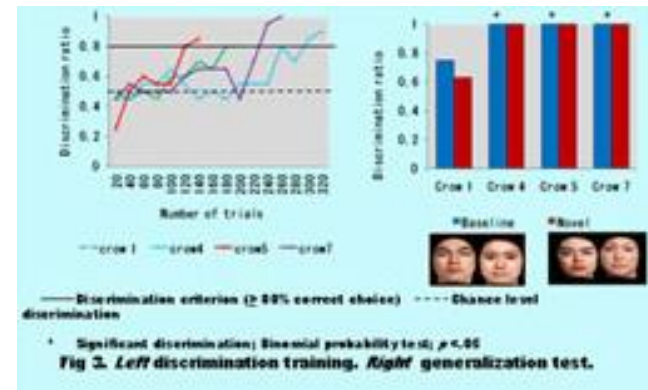
Shoei Sugita, Ph.D.

Professor
Animal Anatomy & Physiology

“Physiology and morphology of the domestic and wild animals; especially central nervous system and mechanisms of vision”



選択標	1	2	3	4	5
実験日 1	●	●	●	●	●
2	●	●	●	●	●
3	●	●	●	●	●
4	●	●	●	●	●
5	●	●	●	●	●
6	●	●	●	●	●
7	●	●	●	●	●
8	●	●	●	●	●
9	●	●	●	●	●
10	●	●	●	●	●



The Division of Animal Science

Faculty



Yoshikazu Nagao, Ph.D.
Professor
Animal Reproductive Science
“Early development and biological applications of bovine embryos”



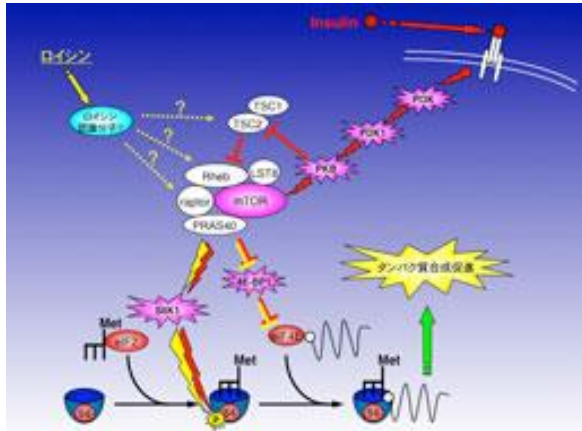
Fumiaki Yoshizawa, Ph.D.
Professor
Nutritional Physiology

“Studies on nutritional regulation of protein synthesis and its mechanism”

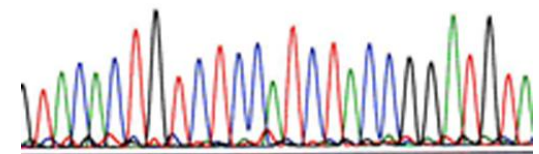


Emiko Fukui, Ph.D.
Associate Professor
Animal Breeding

“Genetic variation of blood proteins and DNA in animals”



TACAC TGTCTCCA TCTACCGGATGTA
100 110 120



TCATTGAAGAGTGGCTTAAATGACTGC
180 190 200



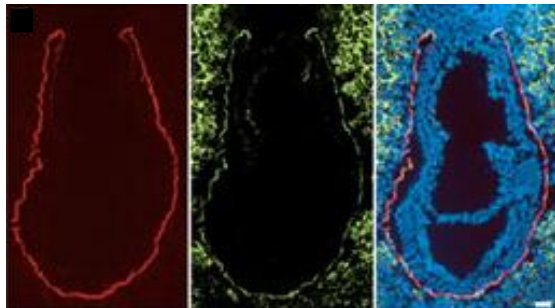
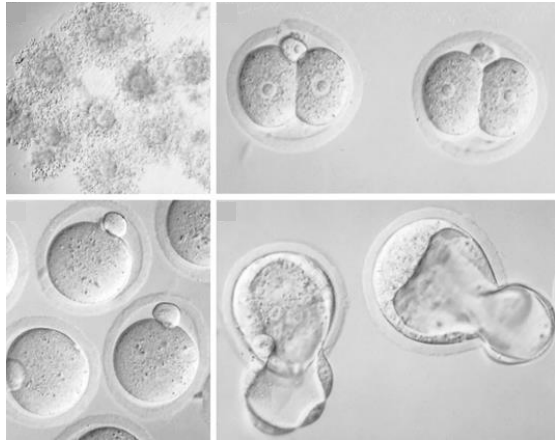
Faculty The Division of Animal Science



Hiro Matsumoto, Ph.D.

Associate Professor
Reproductive Physiology

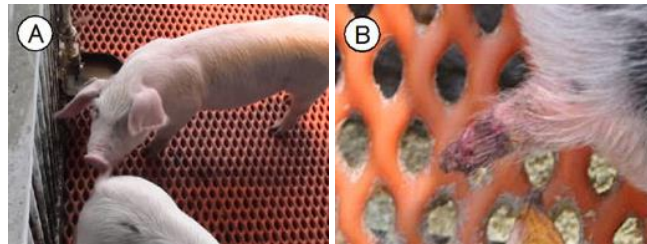
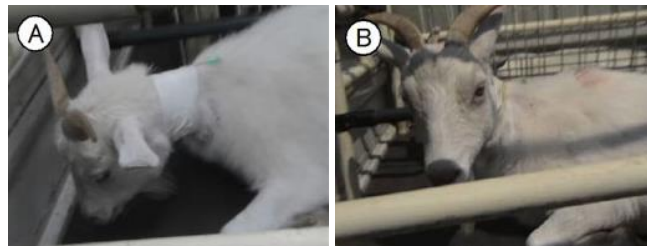
“Developmental biology of mammalian embryos during periimplantation”



Masato Aoyama, Ph.D.

Associate Professor
Applied Ethology

“Neurophysiological mechanisms of stress responses in domestic animals and establish the animal managements for reducing their stress”



Yusuke Sato, Ph.D.

Assistant Professor
Muscle Physiology

“Differential regulation of the muscle”

